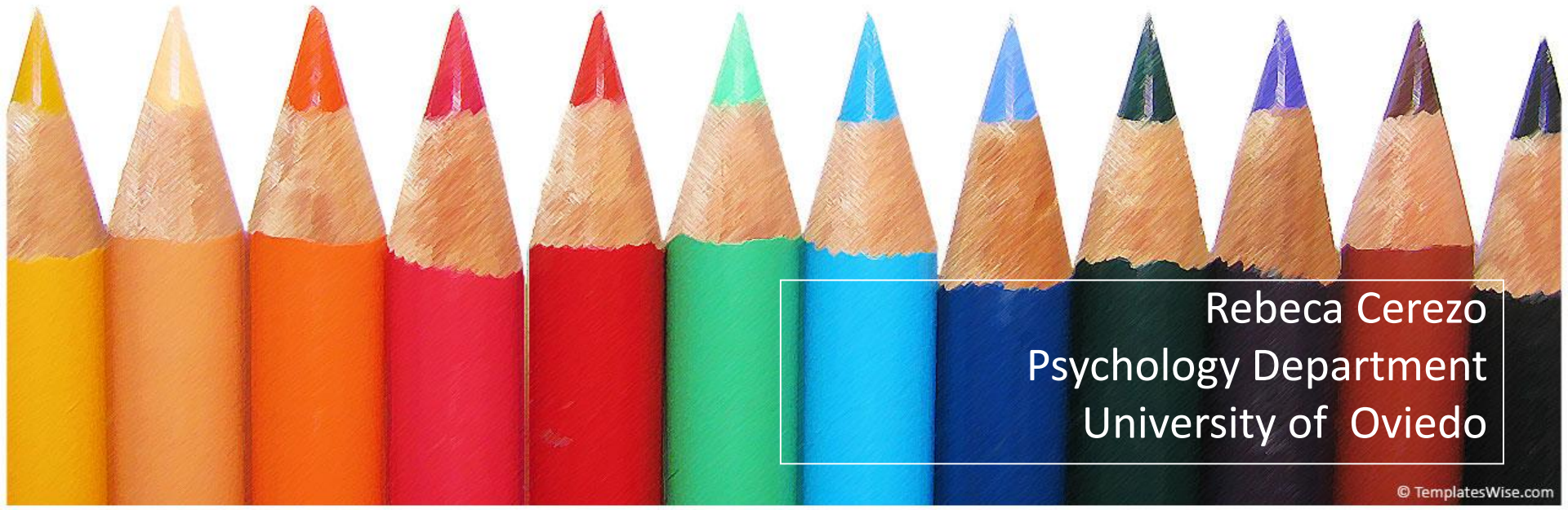


Educational Psychology (EP): theory and practice



Rebeca Cerezo
Psychology Department
University of Oviedo

Definition & concept

- Educational Psychology is the science that studies the ways in which human learning occurs in **educational settings**: how students learn and how they develop as learners.
 - Teaching-Learning Process(T-L).
 - Educational Process Efficacy
 - It is not theoretical **science**, it is **applied** science, seeks research applications to educational processes.
 - Investigate the environment where the phenomenon occurs to clarify the educational process..

CONCEPTUAL APPROACH

EP like

It approaches its subject with 3 goals

**BRIDGE
DISCIPLINE**

*It maintains a relationship with
other disciplines of*

**INTERACTION AND
INTERDEPENDENCE**

provides

develop

develop

**EXPLICATIVE
MODELS**

**PROCEDURES &
STRATEGIES**

**EDUCATIONAL
PRACTICES**

Related with

Related with

Related with

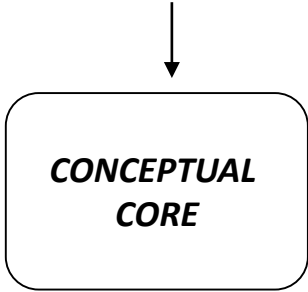
**THEORICAL-CONCEPT
DIMENSION**

**TECHNOLOGY-
PROJECTIVE
DIMENSIÓN**

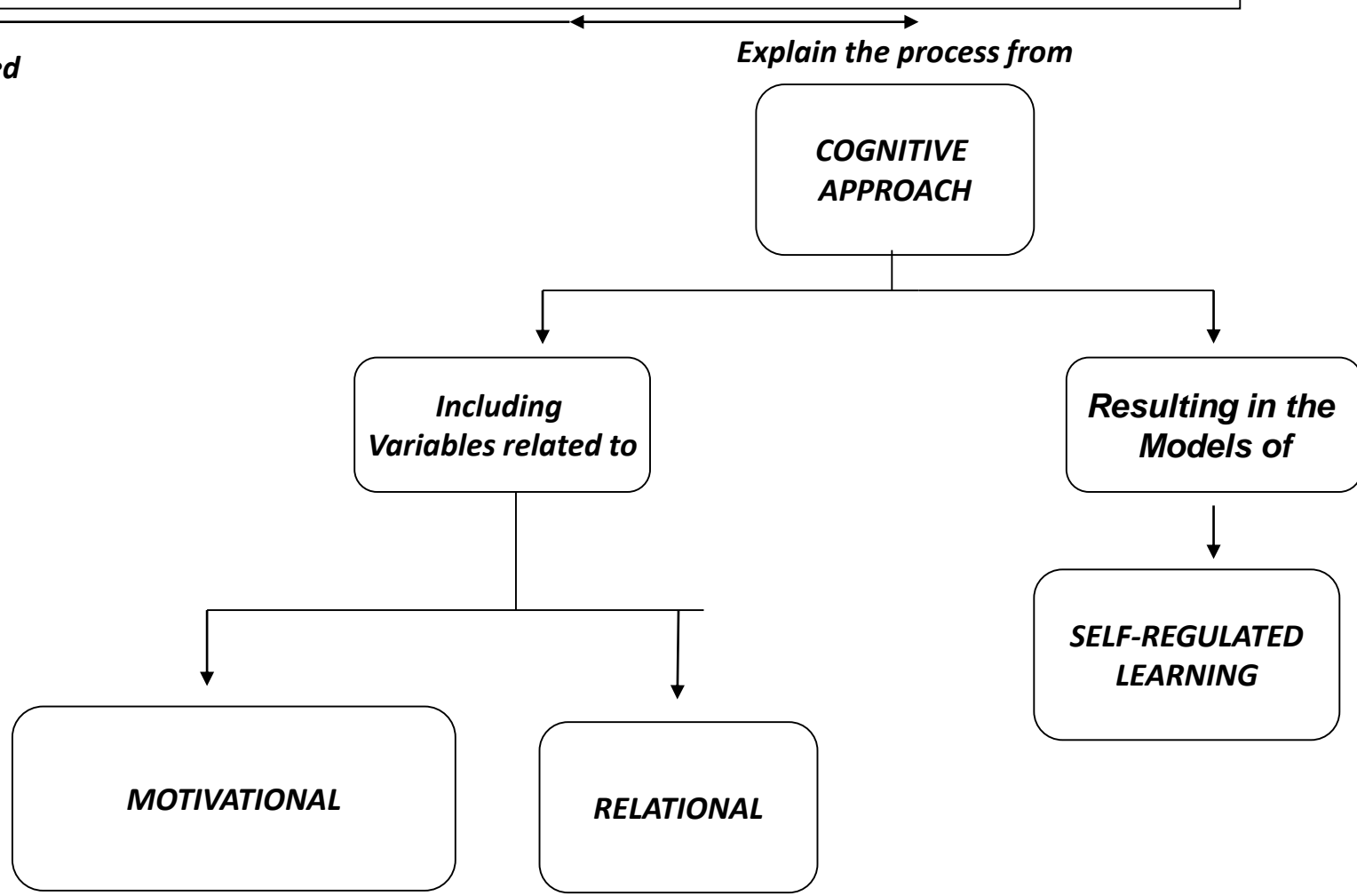
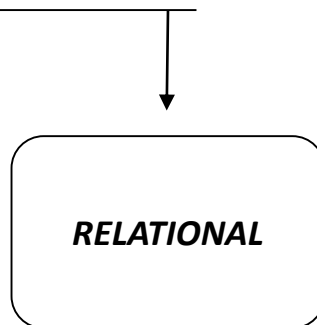
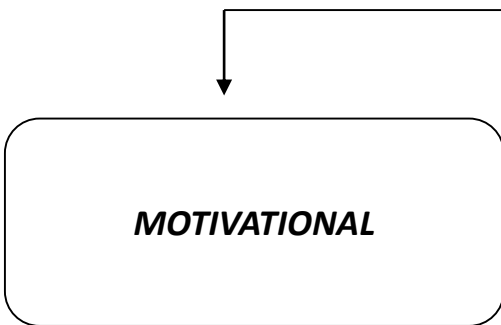
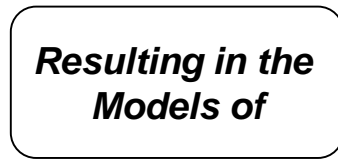
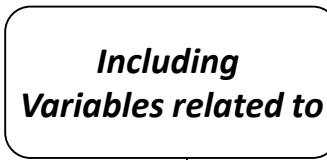
**TECHNICAL-
PRACTICE
DIMENSIÓN**

Theoretical-concept dimension

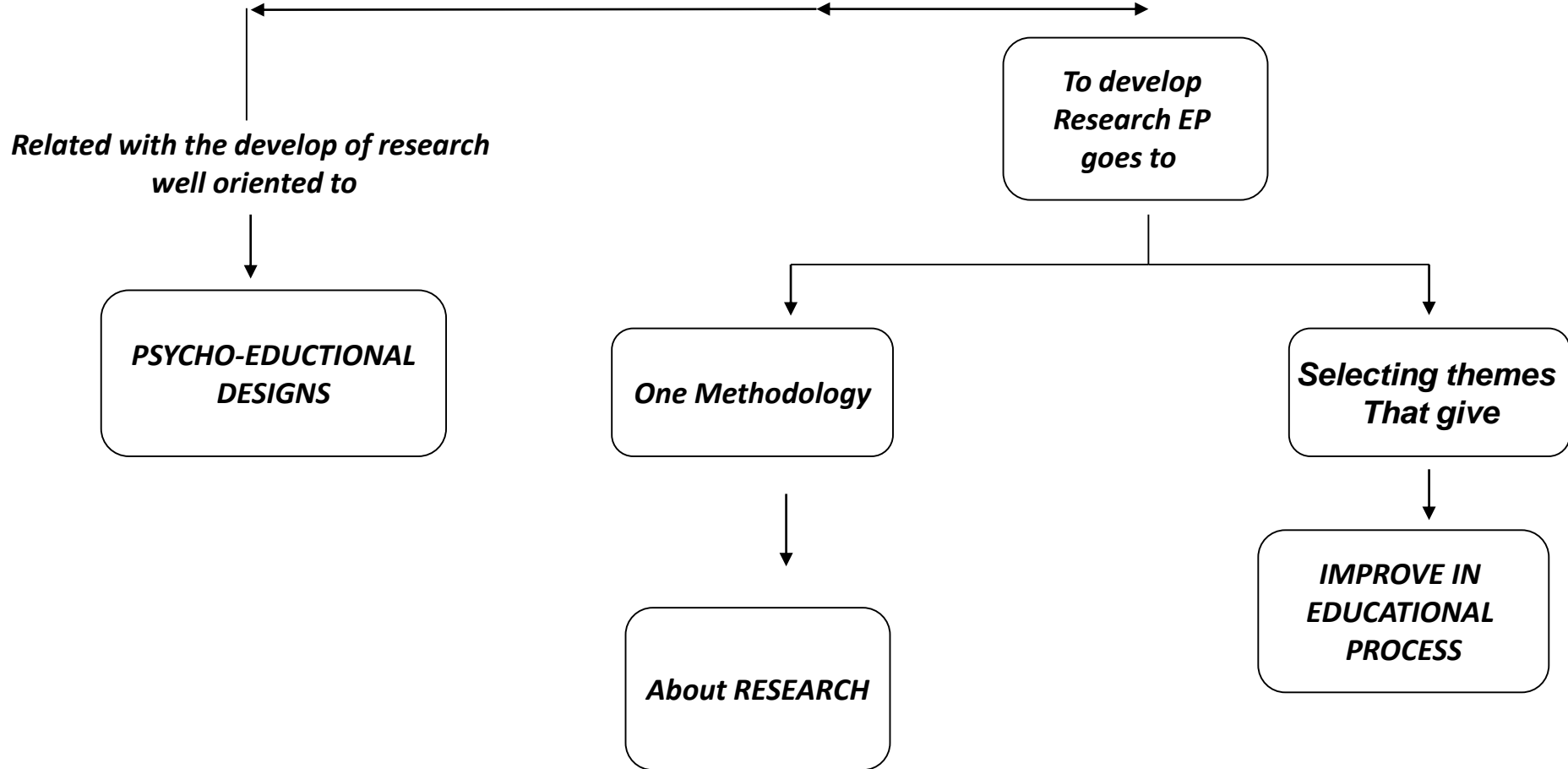
Application-oriented



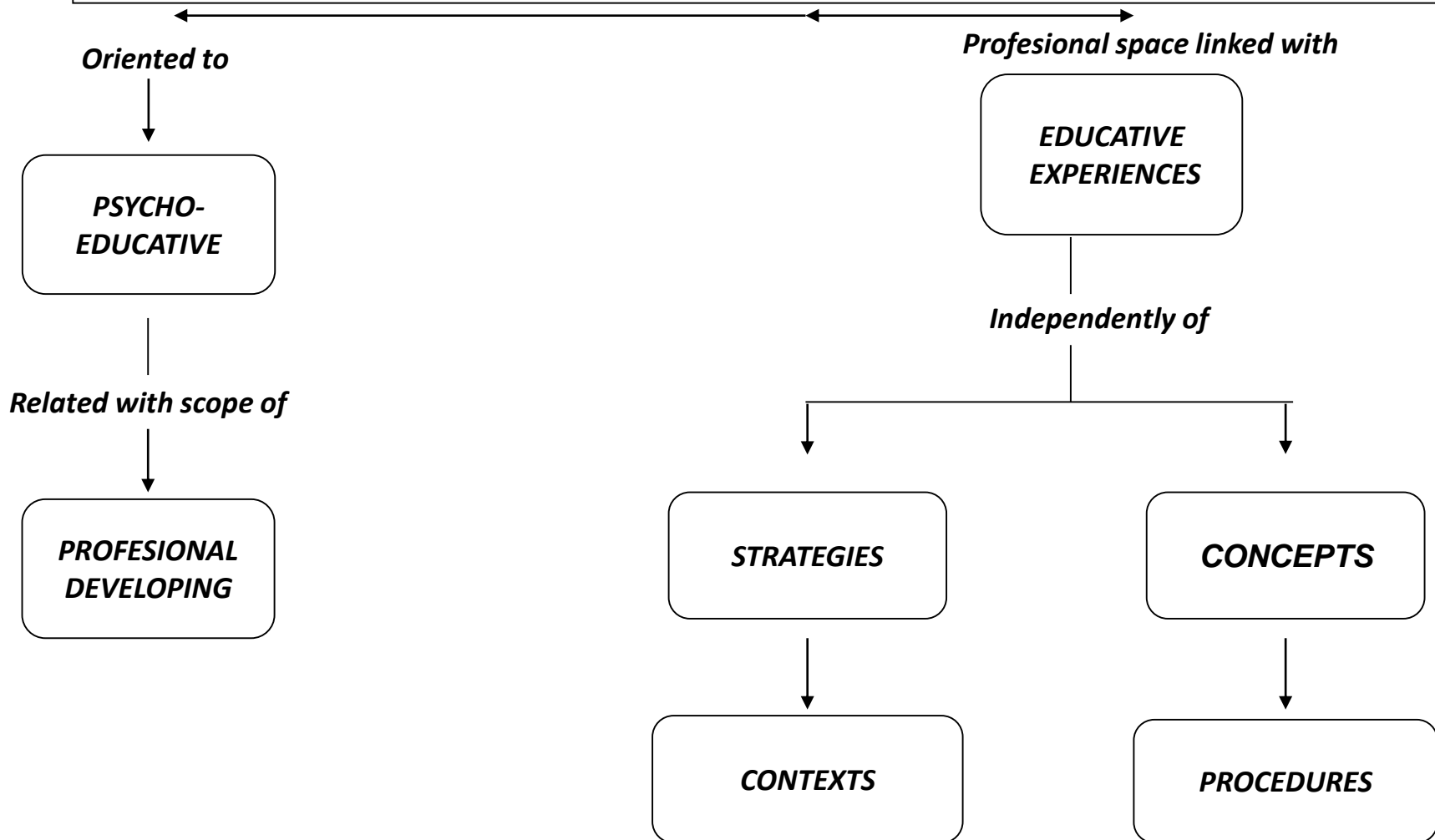
Explain the process from



Technology-projective Dimensión



Technical-practice Dimensión



Research topics in EP

- Research about internal-personal variables.
- Research about learning process and transference.
- Development theoretical models.
- Research about teacher-student interaction.
- Research about teaching.
- Intellectual models.
- Instructional models.
- Research about new technologies.
- Research about diversity.