



CONFINDUSTRIA
Veneto SIAV S.P.A.

open innovation

Visual Plannig

Rational vs. relational project management

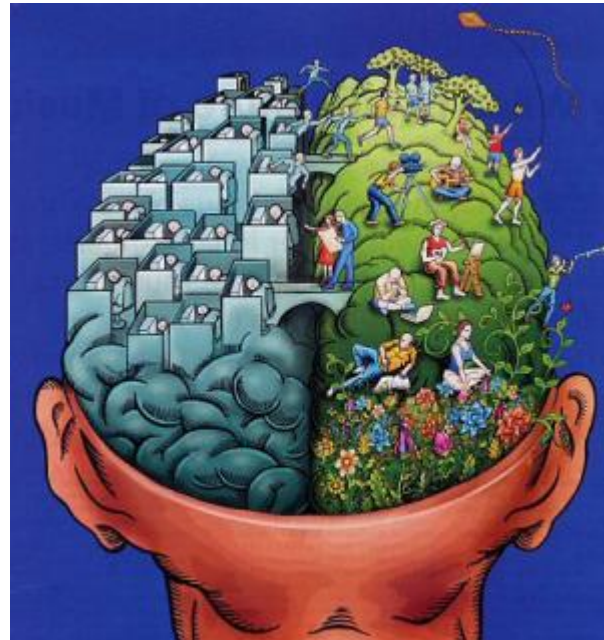
Uberto Cortese - SIAV

Maurizio Scabbia – Open Innovation

Analytical vs intuitive thinking

ANALYTICAL INTUITIVE

YES, NO, AND, OR



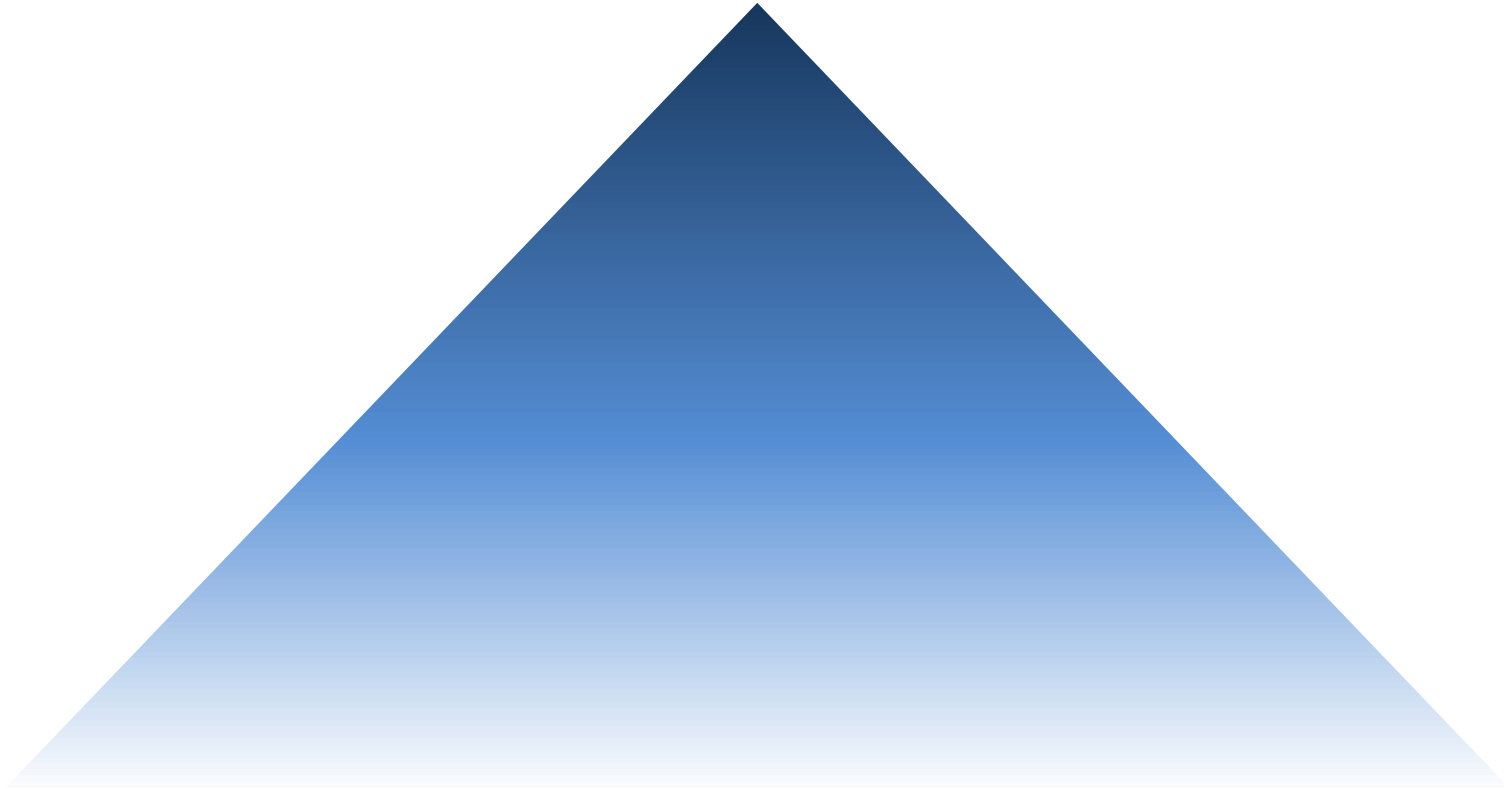
IF

RATIONAL

EMOTIONAL

Analytical vs intuitive thinking

INTUITIVE THINKING: HOLISTIC



ANALYTICAL THINKING: DETAILS



Analytic thinking

- *Analytic thinking* involves understanding a system by thinking about its parts and how they work together to produce larger-scale effects.
- Analytical thinking is a kind of “mechanical” approach:
 - Useful for problem solving
 - Requires many verified details
 - Normally slow
 - Difficult to see the systemic relations between components
 - May be educated
 - Results are demonstrable



Intuitive thinking

- *Intuitive* thinking involves understanding a system by sensing its large-scale patterns and reacting to them
- Holistic thinking is a kind of “holistic” approach:
 - Understands complex situations
 - Based on personal perceptions
 - Normally fast
 - Useful for social situations
 - Seems to be innate
 - Results are not demonstrable

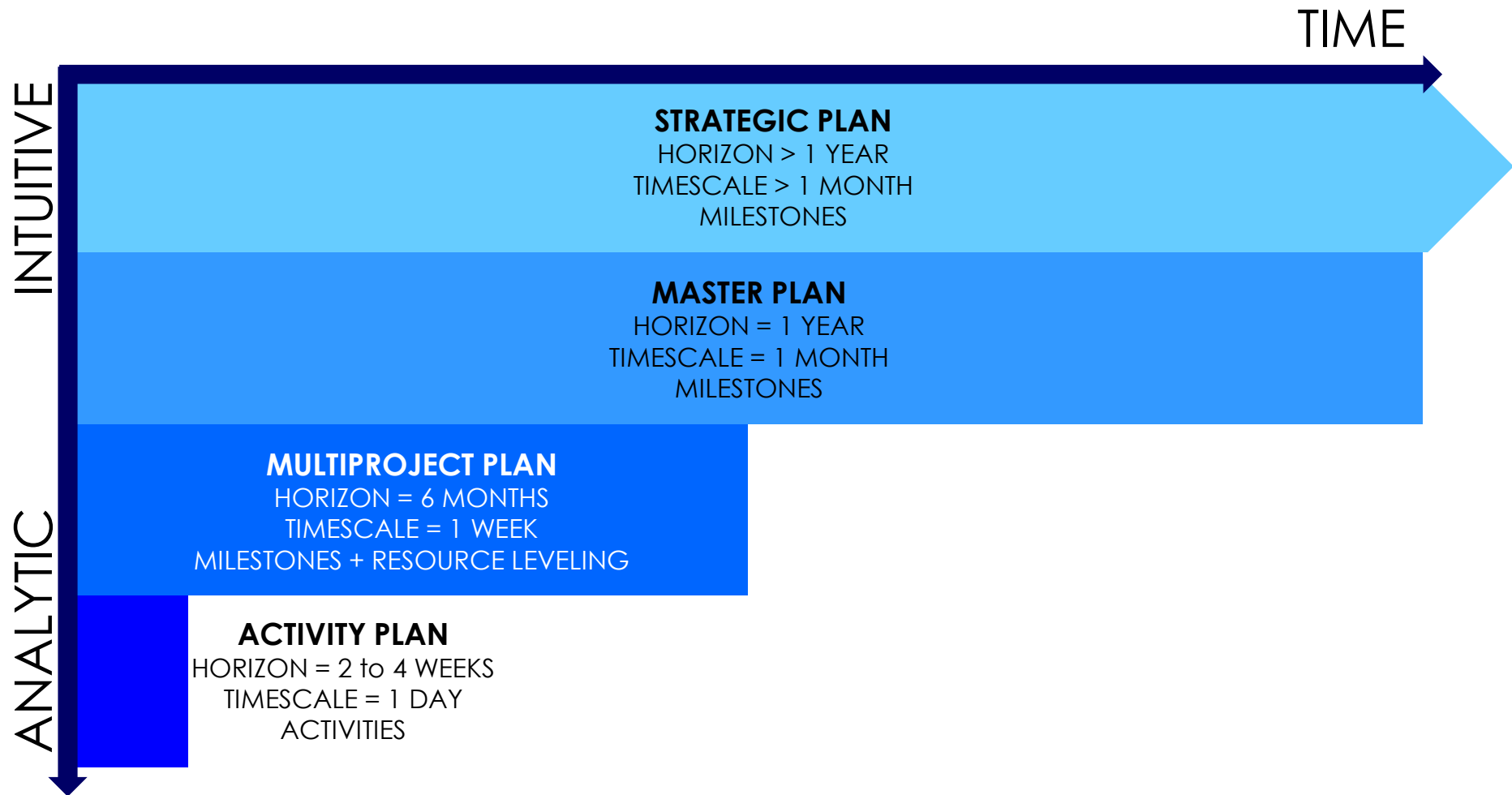


Project management needs both analytic and intuitive thinking

- Intuitive thinking:
 - In the early stages
 - In the long term
- Analytic thinking:
 - In the short term



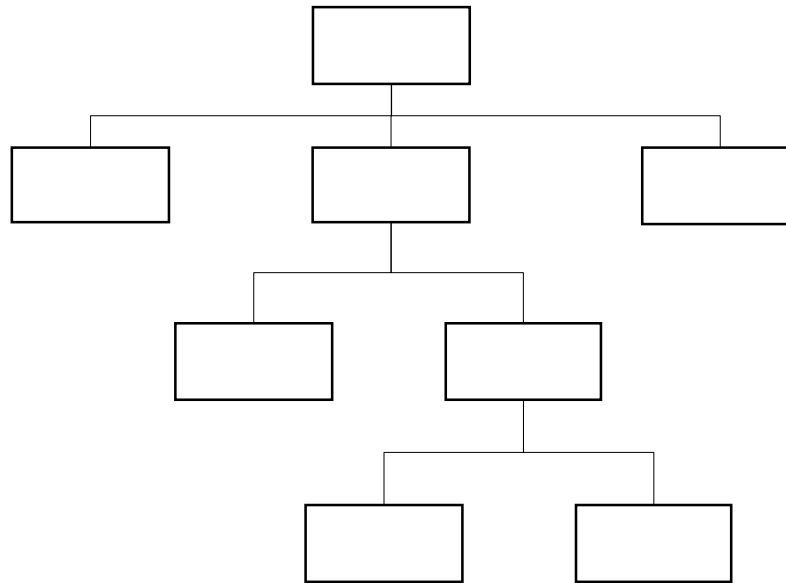
Analytic and intuitive thinking: planning



Analytic and intuitive thinking: estimating

ANALYTIC INTUITIVE

WBS



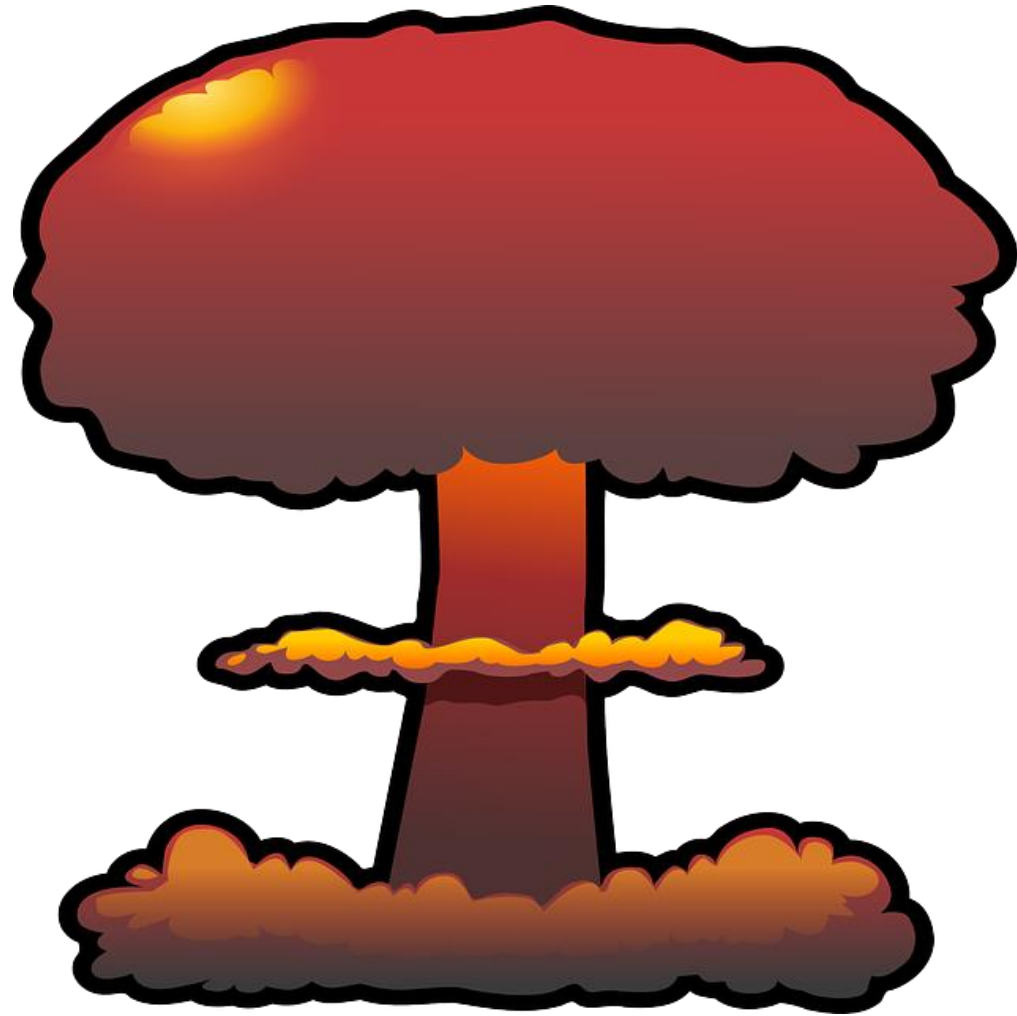
EFFORT

- System design = 100 h
- Prototyping = 50 h
- Testing = 200 h

Decoupling different levels

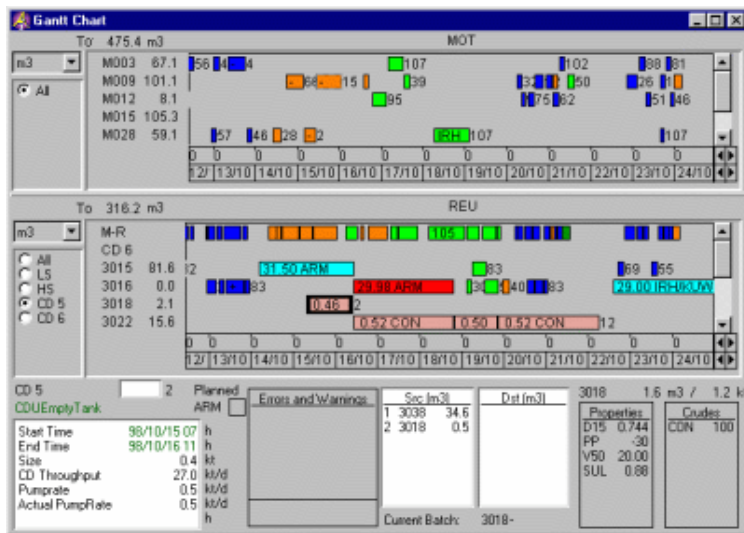


Decoupling the different levels to avoid the butterfly effect



Rational vs. relational project management

- The rational (classical) project management approach focuses on activities and optimization algorithms
- The relational (lean) approach focuses on people: planning is part of the execution activities



Relational project management

- Relational project management requires the participation of the whole team in the planning process.
- This drives to:
 - Better plans
 - Better understanding of deadlines from team members
 - Plans always updated



Rational vs relational project management

RATIONAL

- Manages more detailed models (+info, +granular)
- Rigidity
- Uses optimization algorithms
- Difficult to understand what is happening

RELATIONAL

- Simpler models
- More flexibility
- Manual optimization
- Easy to understand
- People involvement
- Easy to implement and improve
- Cheaper

